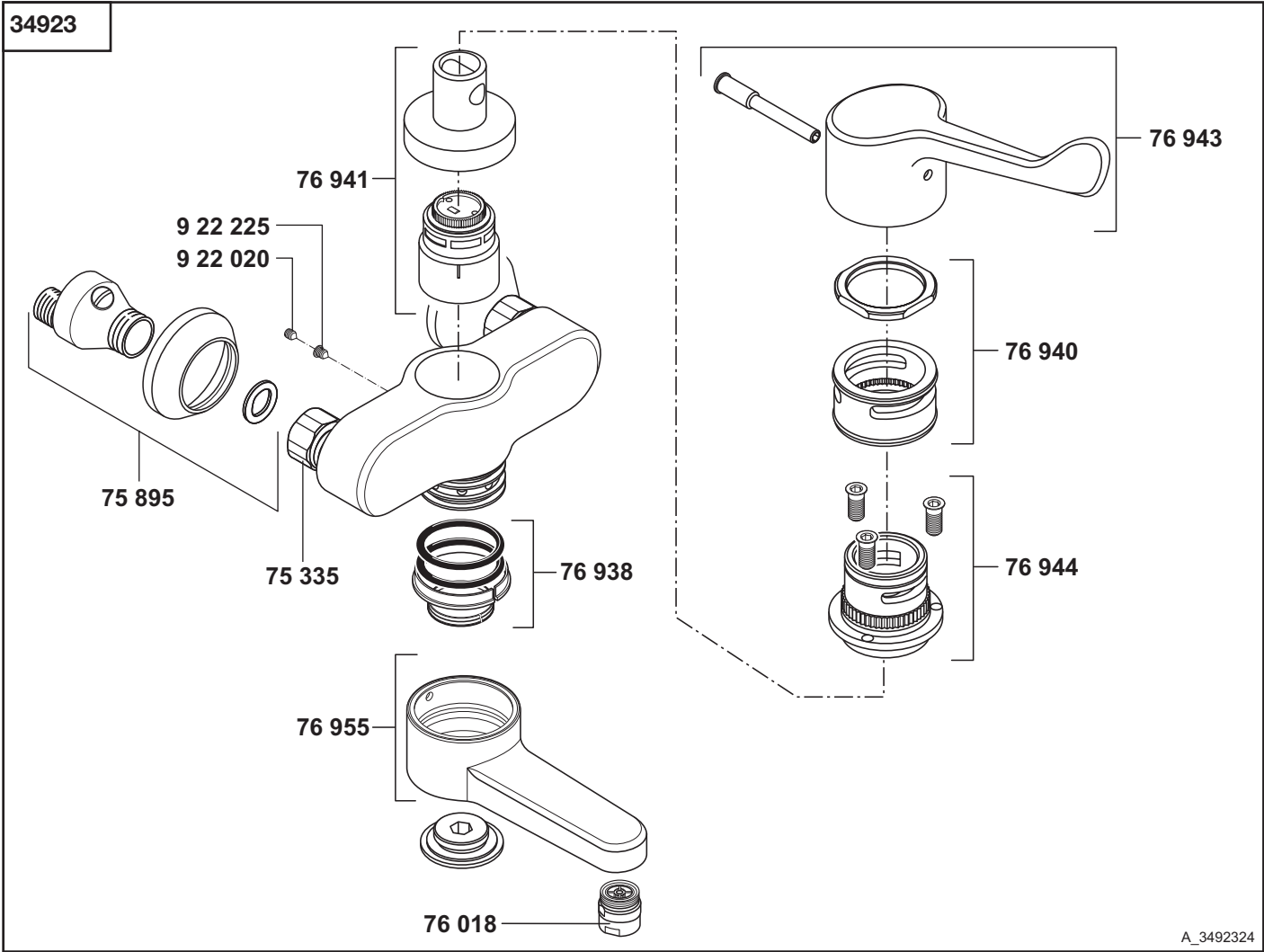


P.8-11

KLUDI MEDI-CARE



A_3492324

34923	Wand-Einhandmischer DN 15	single lever wall mixer DN 15	ééngreeps wandmengkraan 1/2"
	75 335 Wandarmaturanschluss 75 895 S-Anschluss 76 018 Care-Strahlregler 76 938 Dichtungssatz 76 940 Desinfektionskranz 76 941 Kartusche, KLUDI MEDI-CARE 76 943 KLUDI MEDI-CARE, Klinik-Armhebel	wall-fitting connection S union care flow straightener sealing set disinfecting rim cartridge, KLUDI MEDI-CARE KLUDI MEDI-CARE, arm lever for hospital purpose	wandmengkraan aansluiting S-koppeling Care-mondstuk set dichtingen desinfectiering cartouche, KLUDI MEDI-CARE KLUDI MEDI-CARE, lange hendel
	76 944 Spannhülse 76 955 Gussauslauf KLUDI MEDI-CARE 922 020 Auslaufbefestigungsschraube 922 225 Nirosta-Schraube	fastening cap casted spout KLUDI MEDI-CARE fastening screw for spout Stainless screw	spanhuls gegoten uitloop KLUDI MEDI-CARE bev. schroef voor uitloop Nirosta schroef